



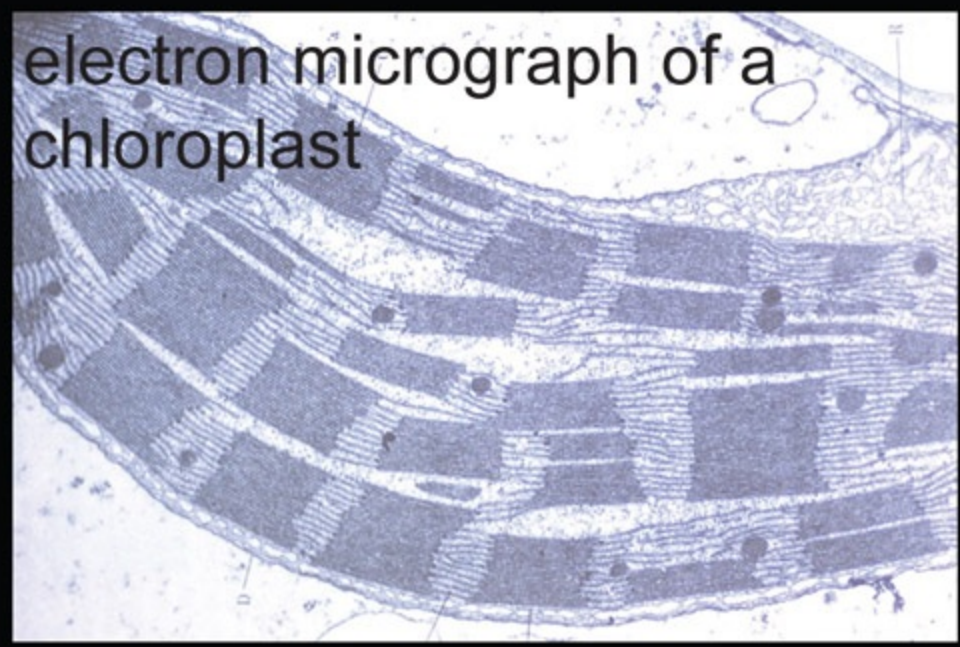
moss cells



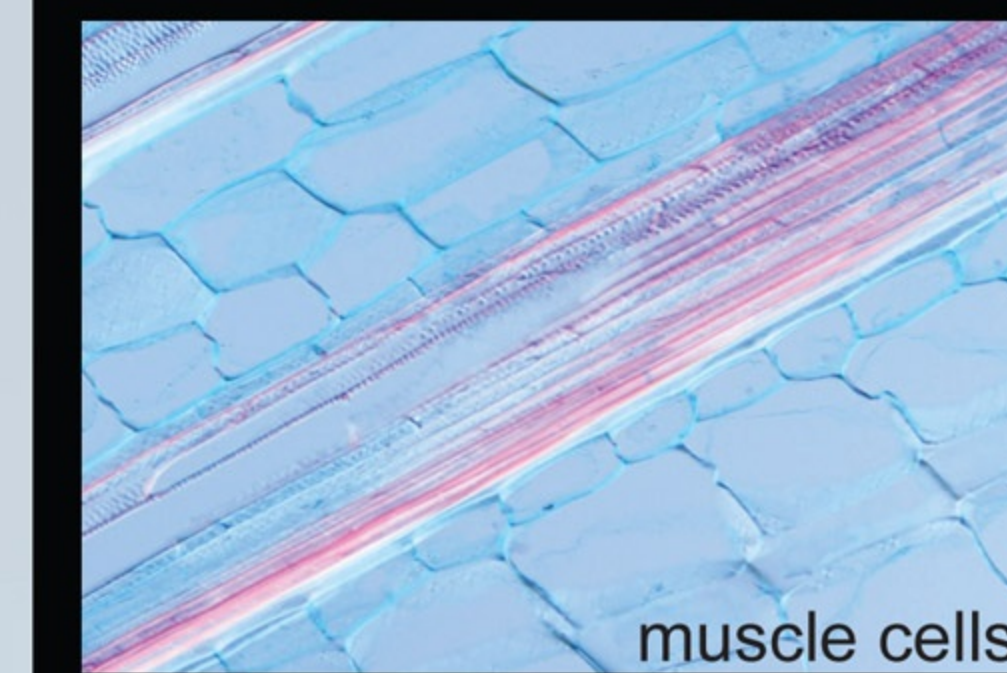
Euglena



colonial algae



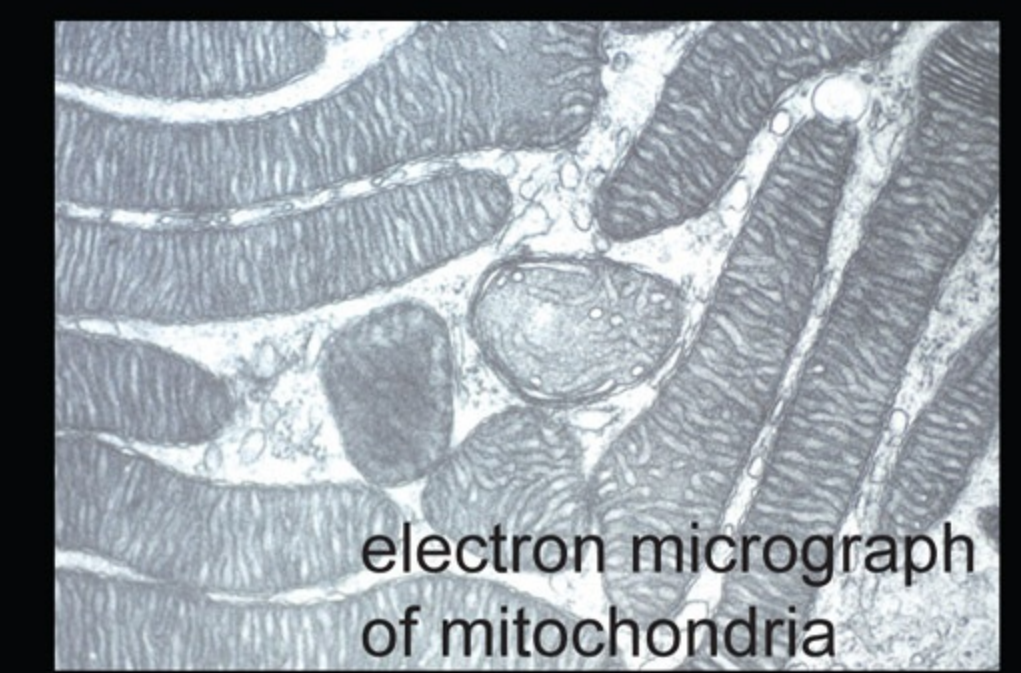
electron micrograph of a chloroplast



muscle cells



mitochondria in Paramecium



electron micrograph of mitochondria

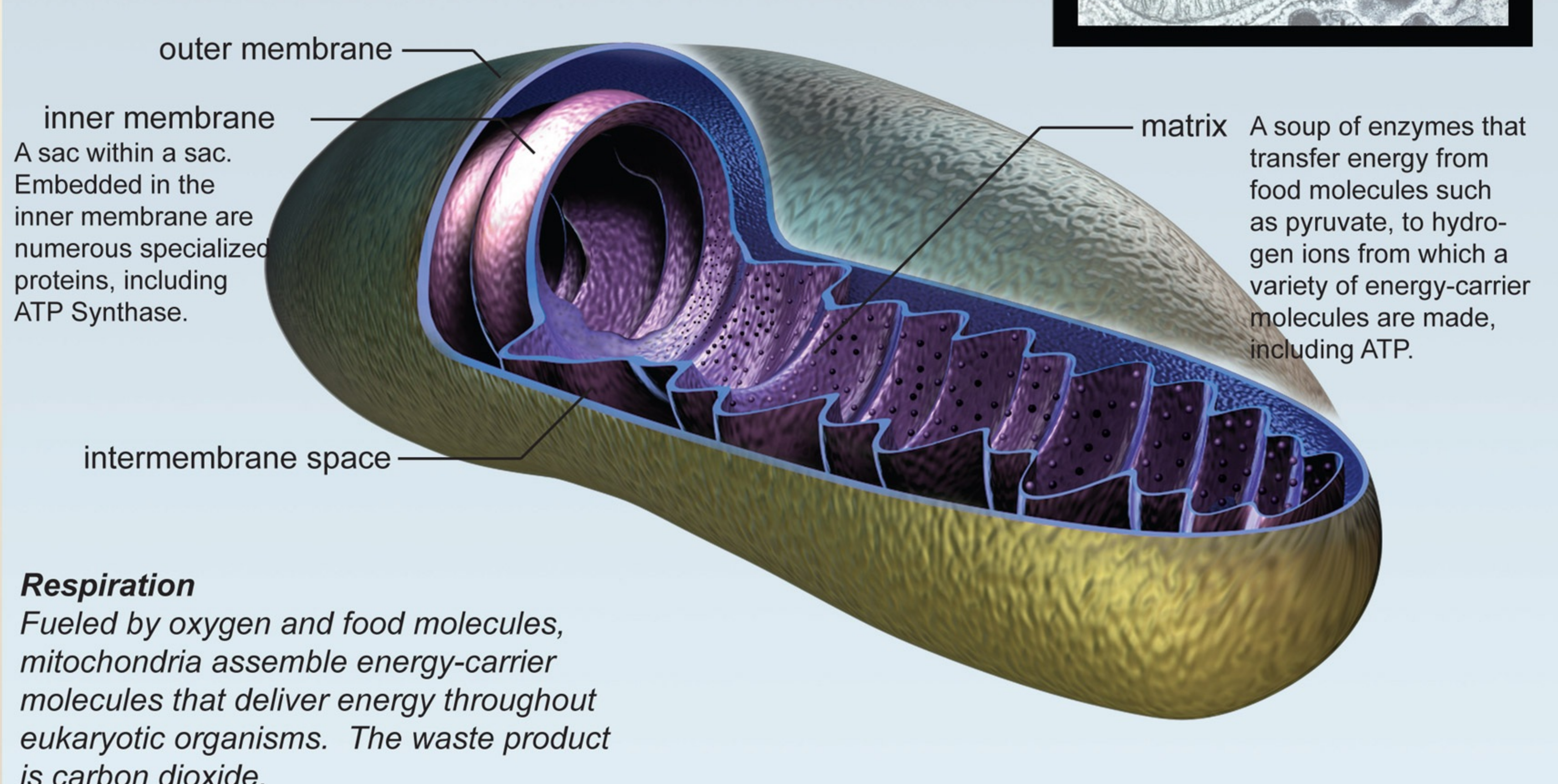
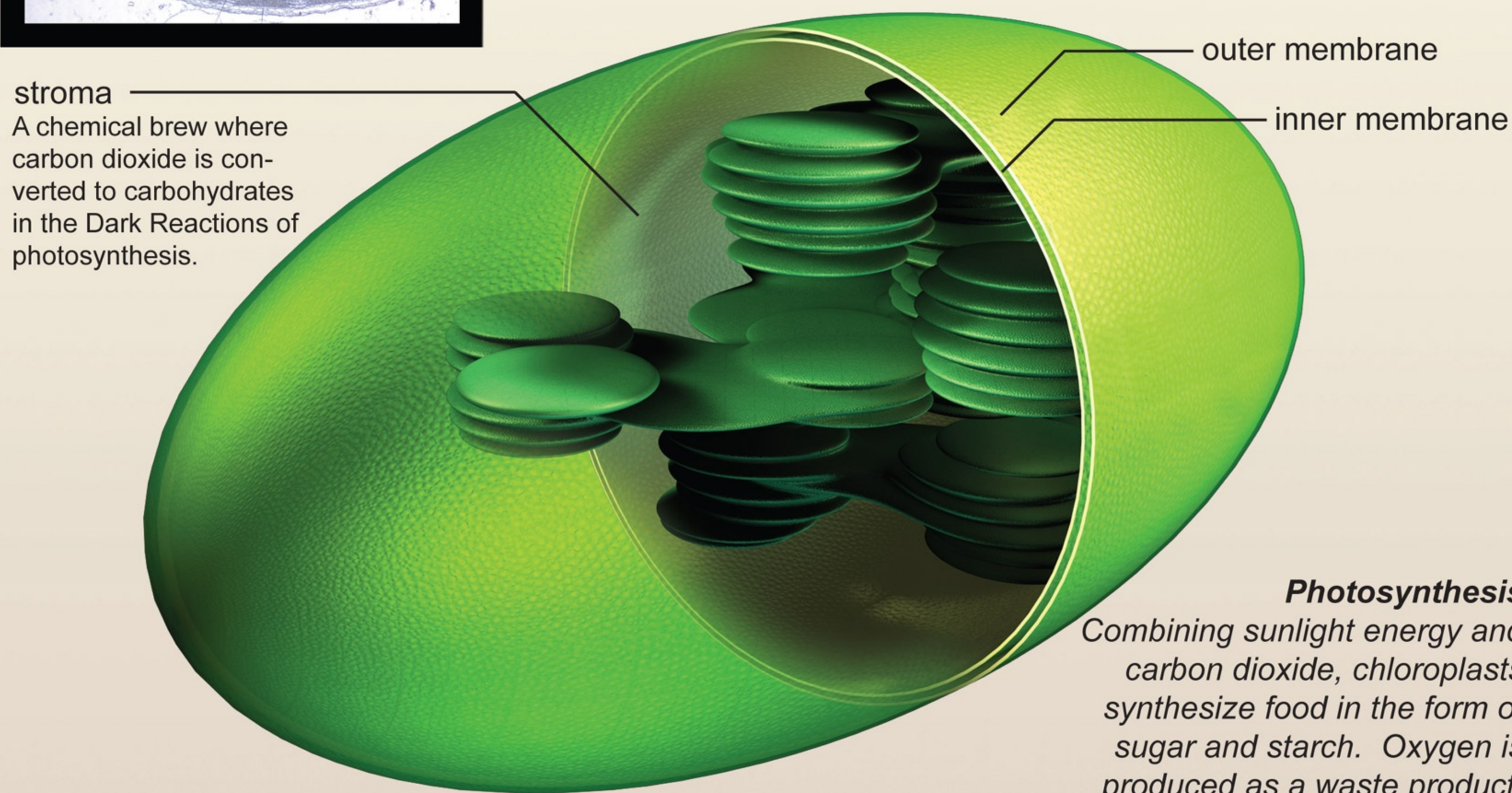


electron micrograph of a mitochondrion interior

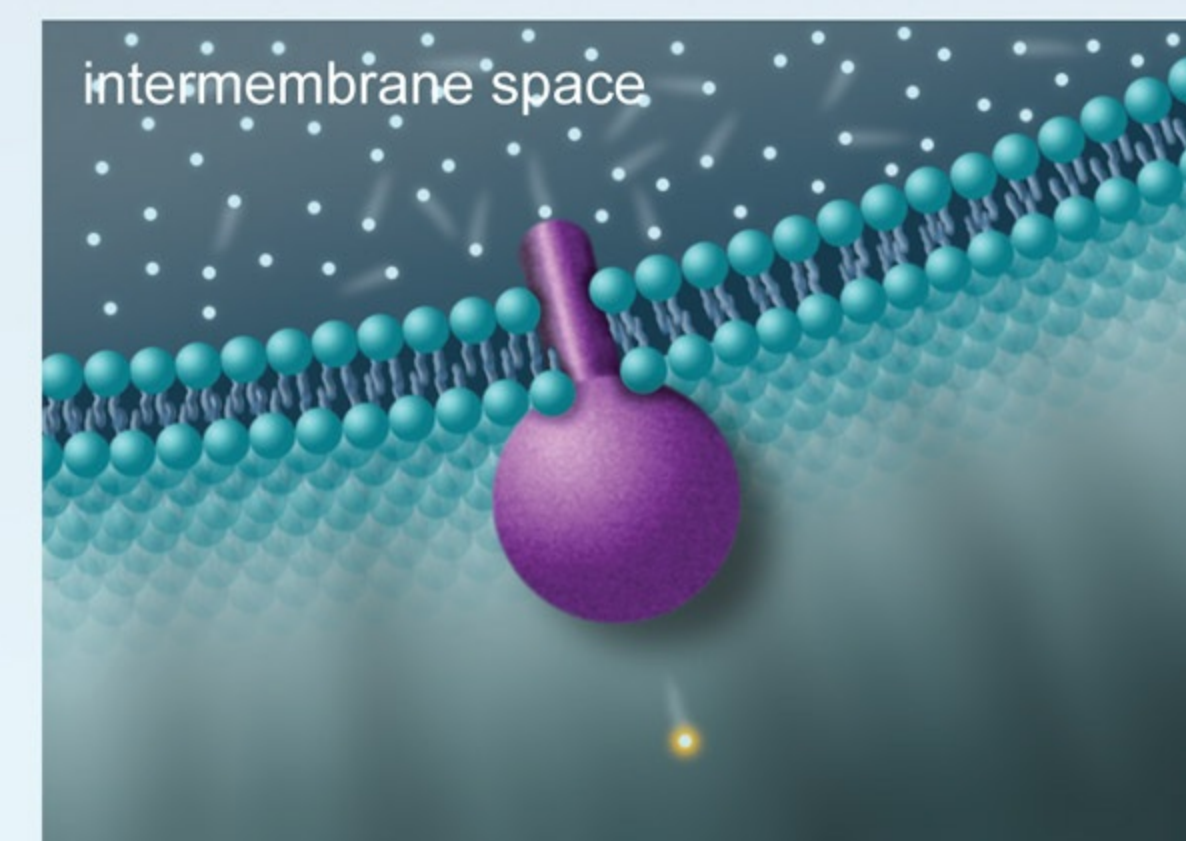
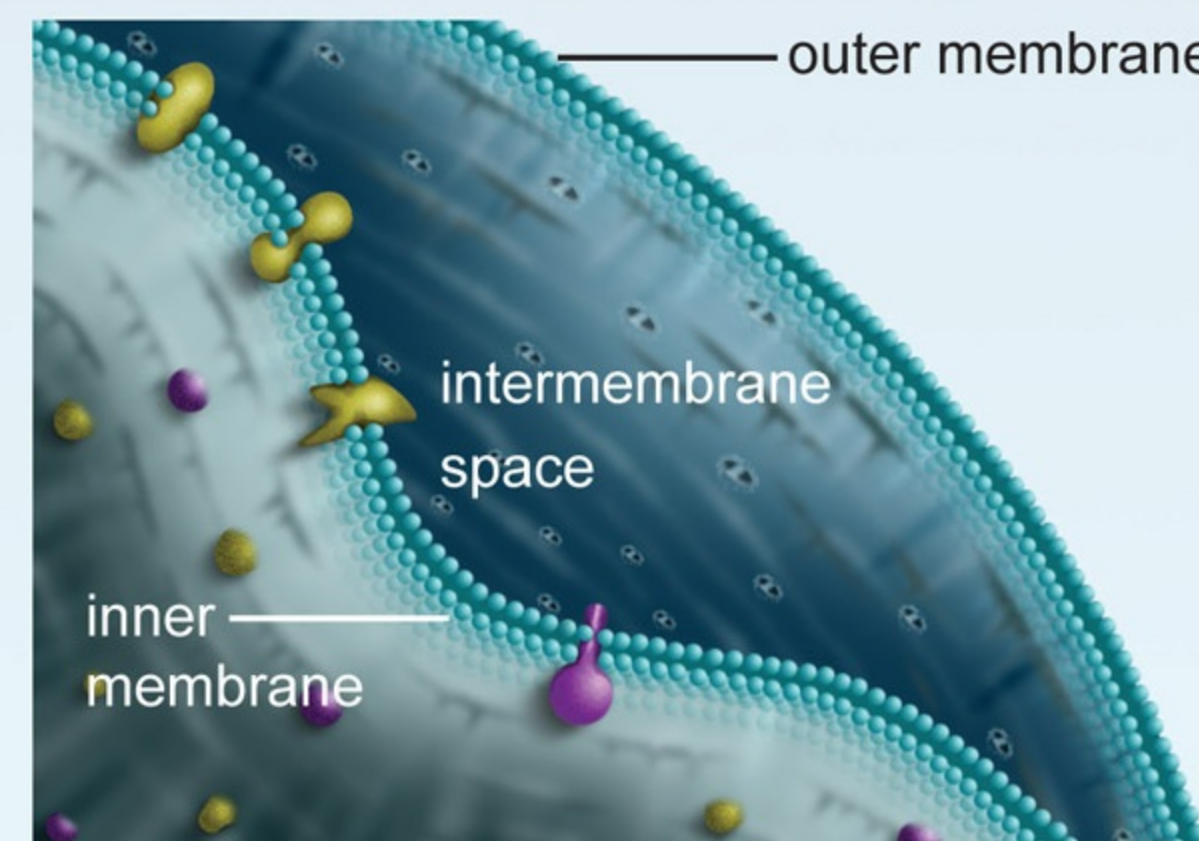
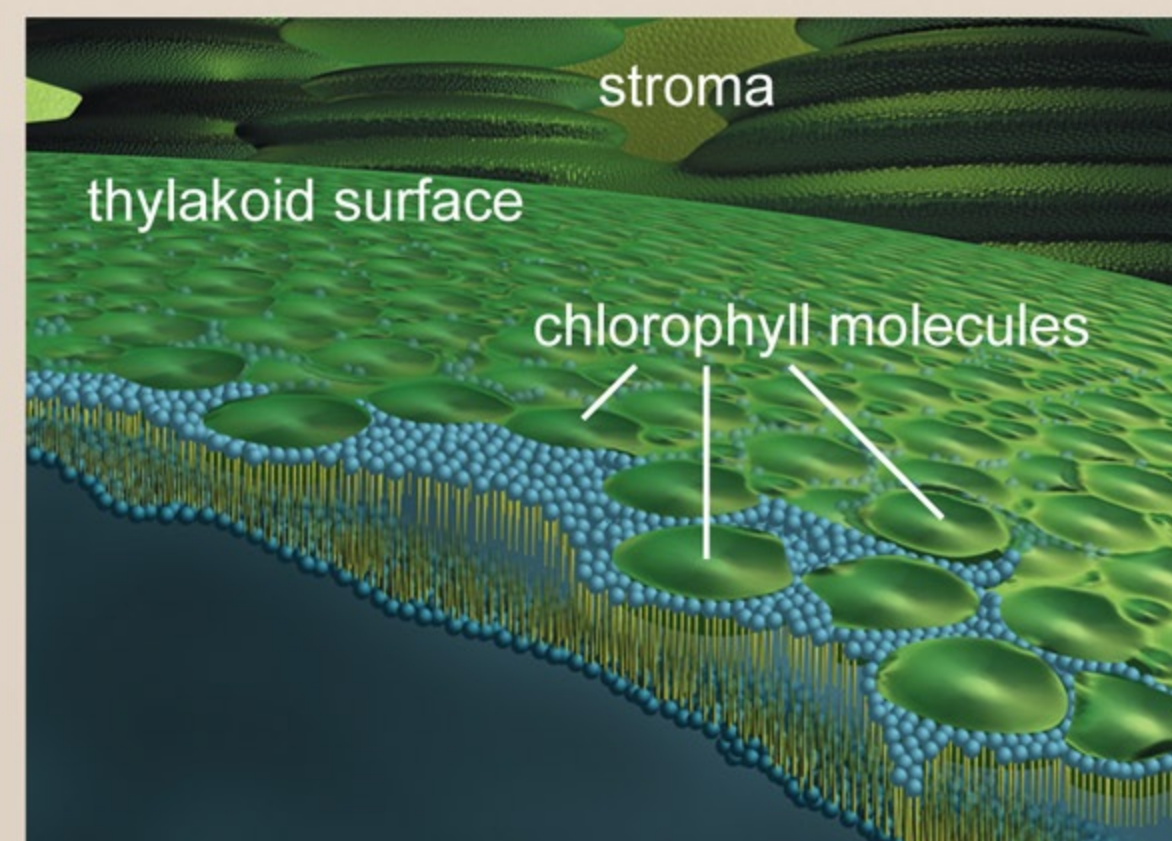
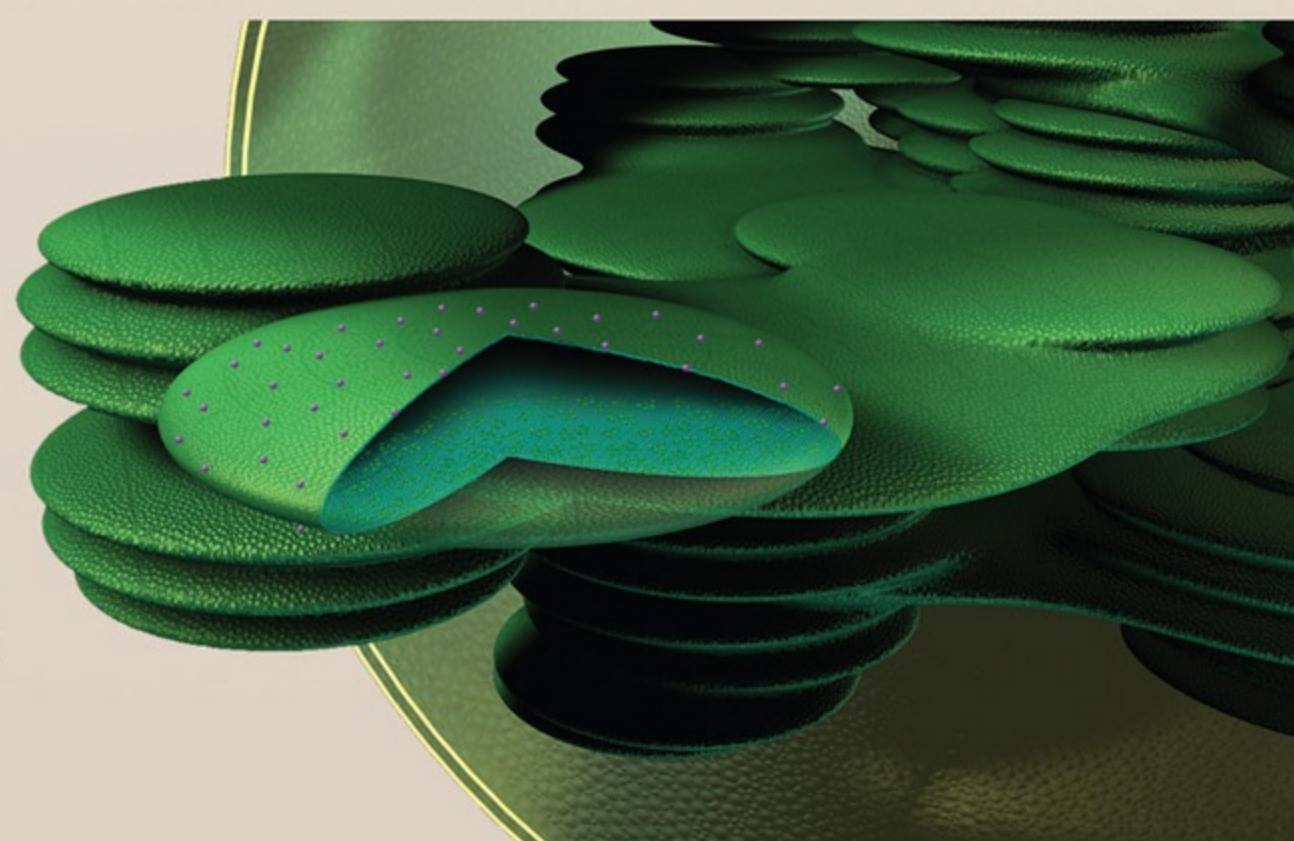
Life's Energy Organelles

The Chloroplast

The Mitochondrion



thylakoids
Hollow disc-shaped bodies where chlorophyll molecules facilitate the Light Reactions of photosynthesis. Energy-carrier molecules are produced and oxygen is given off.



ATP Synthase
A protein that pumps hydrogen ions from the intermembrane space, into the matrix, in the process converting ADP to ATP, the most common energy-carrier molecule.